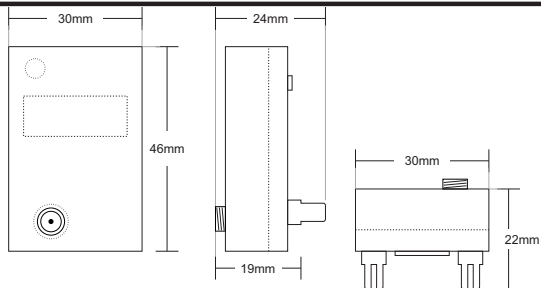
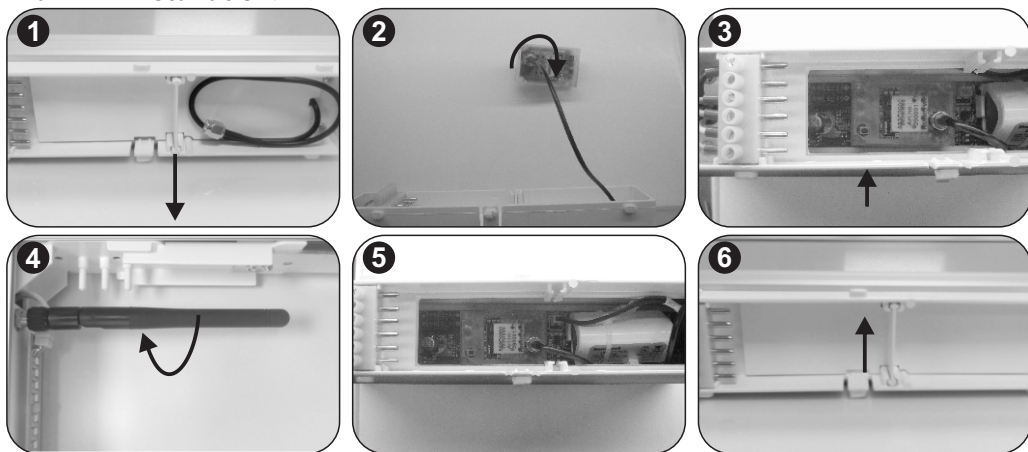


### Plug-in Module Exi-/MaxLED T2

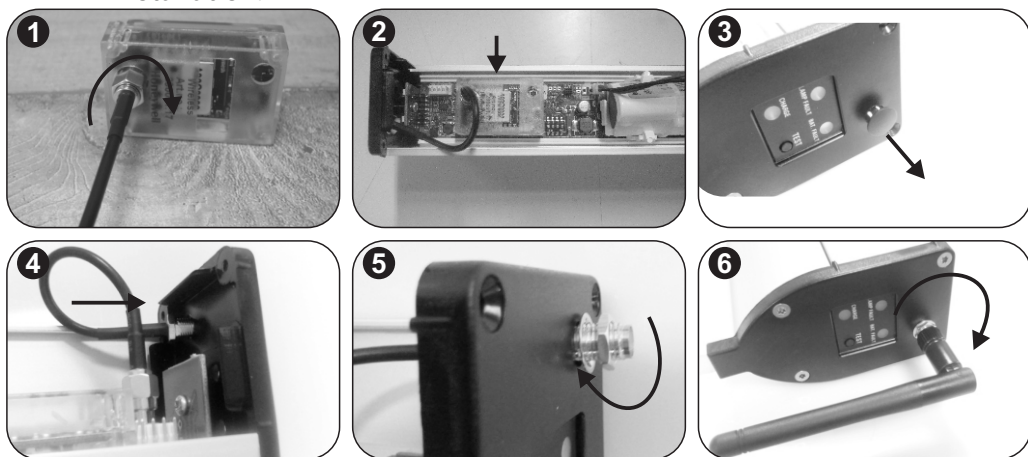
Dimensional drawings:



MaxLED Installation:



ExiLED Installation:



The device comes with 4 label stickers that contain a Unique identification code (UID) that is hexadecimal formatted in 4 bytes. An example UID is **45 90 DB FA**. It is advised to stick one sticker on the module and one sticker on the luminaire that the module will be fitted in. The two remaining stickers may be placed on a printed floor plan, text lists etc.

**MaxLED (See pictures on page 1):**

1. Disconnect mains from the luminaire, slide the luminaire of the bracket. Remove the top lid.
2. Disconnect the battery and connect the internal extension antenna cable to the WL Module.
3. Plug the module.
4. Screw on the antenna.
5. Reconnect the battery and confirm LED operation.
6. Refit the top lid, assemble the luminaire and reconnect mains.

**ExiLED (See pictures on page 2):**

1. Screw on the extension antenna cable.
2. Disconnect mains from the luminaire, slid and open the luminaire case, (ref. ExiLED inst. manual) and disconnect the battery. Plug the module.
3. Remove cap.
4. Remove nut and washer from the antenna cable and pass the cable through the side hole.
5. Tighten the nut and washer from the outer side (tool recommended). Make sure there are no sharp bends on the antenna cable.
6. Screw on the antenna.
7. Reconnect the battery and confirm LED operation. Assemble the luminaire and reconnect mains.

You are now ready to setup the module for network communication. For network setup refer to the wireless network comissioning manual.

**Function**

This device has three indication LEDs.

**Top LED (green): RF connection status**

**Steady on:** The device has established direct connection to a Gateway Device, and at least one more Gateway Device is available for alternate routing (false condition).

**Flashing 5 times per sec.:** The device has established direct connection to a single Gateway Device.

**Flashing 2 times per sec.:** The device has established connection to a Router Device, and at least one more Router Device is available on the same hop level, as an alternate route (redundant connection).

**Flashing 1 sec. on / 1 sec. off:** The device has established connection to a single Router Device, and no alternatives exist on the same hop level.  
The device is disconnected.

**No light:**

**Middle LED (green):** Received signal strength (RSSI)

**Flashing 5 times per sec.:** RSSI is very good.

**Flashing 2 times per sec.:** RSSI is good.

**Flashing 1 sec. on / 1 sec. off:** RSSI is acceptable for reliable communication.

**Flashing 2 sec. on / 2 sec. off:** RSSI is not acceptable for reliable communication.

**Bottom LED (red):** Indicates initialization

**Flashing 5 times per sec.:** The module is not initialized correctly. In this case you have to press for more than 2 seconds the push button, in order to re-initialize the module.

**Flashing 2 times per sec.:** The module is working properly.

**Button functionality**

Short press: A status message will be issued to the gateway device of the wireless network.

Press more than 2 sec.: The router module will restore to its factory default settings. This is extremely useful in case of an error setting during wireless network installation.



At the end of their useful life the packaging and product should be disposed of via a suitable recycling centre.  
Do not dispose of with your normal household waste.  
Do not burn.



Technical description	Plug-in Module Wireless Exi-/MaxLED T2
Part no.	138091.17
Operation voltage	2.7-3.3V DC
Power Consumption	< 0.2W
Ambient temperature range	5 to 40 °C
Relative Humidity	< 95%
IP Rating	IP20